



Dongle 3 Driver Installation and Removal Procedure (Windows 7)

Geonautics International Pty Ltd

PO Box 1624, Coorparoo DC, Qld 4151 Australia

60 Morley Street, Coorparoo, Qld 4151 Australia

Ph: +617 3324 2555 www.geonautics.com Fax: +617 3324 2566

ABN 30 081 921 691



Contents

Purpose..... 3

Scope 3

Driver Installation Procedure 4

Driver Removal Procedure 10



Purpose

This document outlines the process for installing and removing the device driver for the Geonautics Dongle 3 USB Download cable.

After the installation process has been completed, the Dongle 3 will be ready for use with applicable Geonautics software.

Scope

This procedure applies to the Microsoft Windows 7 operating system. The procedure may vary under other versions of Windows.

Additionally it is assumed that the driver will be installed from a CD-ROM supplied by Geonautics and that there is a free USB 1.1 (or higher) port available on the Computer to connect the Dongle 3.



Driver Installation Procedure

Before starting this procedure please ensure the following:

- All Geonautics applications have been closed. It is recommended that **all** applications be closed.
- The CD containing the Dongle 3 driver is inserted in the CD-ROM drive.

To begin the installation, connect the USB plug of the Dongle 3 USB Download to the computer.

After several seconds the Dongle 3 will be detected and an **Installing Device Driver Software** notification will be displayed.

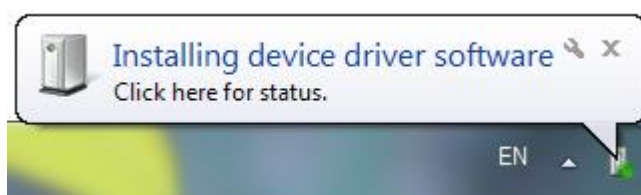


Figure 1: The Installing Device Driver Software notification

After some minutes Windows will display the following notification.

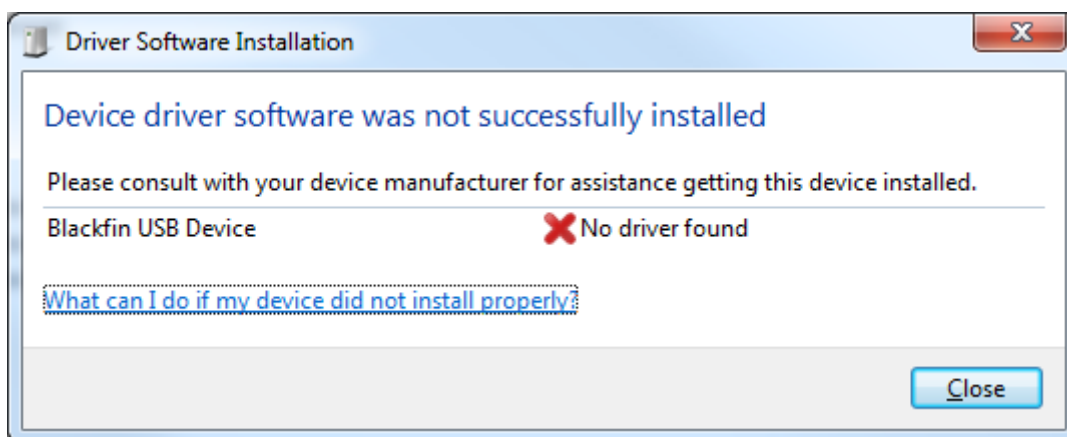


Figure 2: Driver Software Installation failed installation notification

Since Windows 7 no longer looks to the CD-ROM by default, Windows needs to be given the location of the drivers manually. This is done via the following process:

Load the **System** window by any of the following methods:

- holding down the **Windows** (⊞) key and pressing the **Pause** key,
- clicking on the **Start** button, selecting **Control Panel**, selecting the **System and Security** item, then selecting the **System** item, or
- typing the following into the address bar of a Windows Explorer window and pressing enter:
"**Control Panel\System and Security\System**" (without the double quotes.)



The **System** window will be displayed.

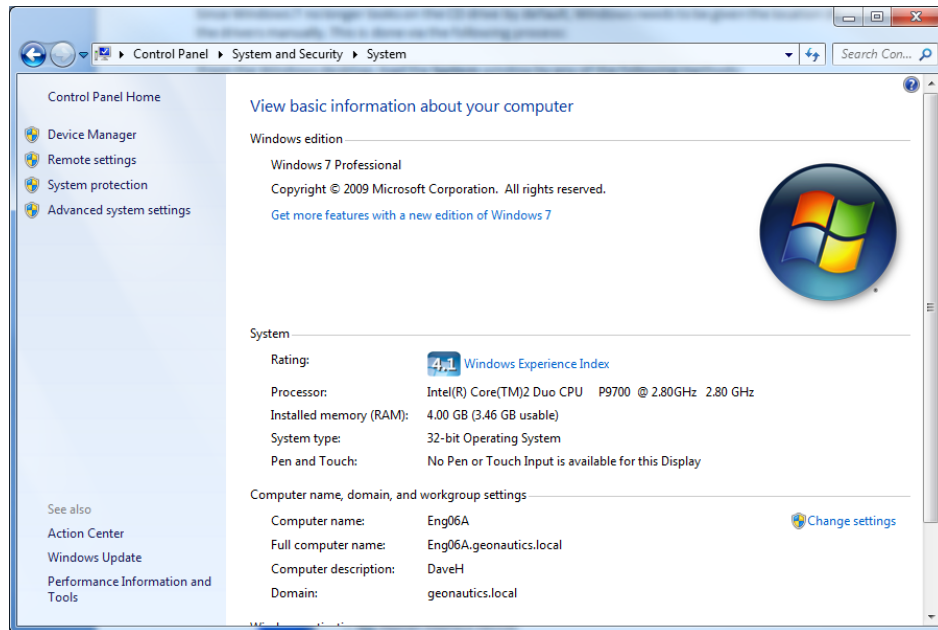


Figure 3: System Window

Select the **Device Manager** item in the top-left corner of the window. The **Device Manager** window will be displayed.

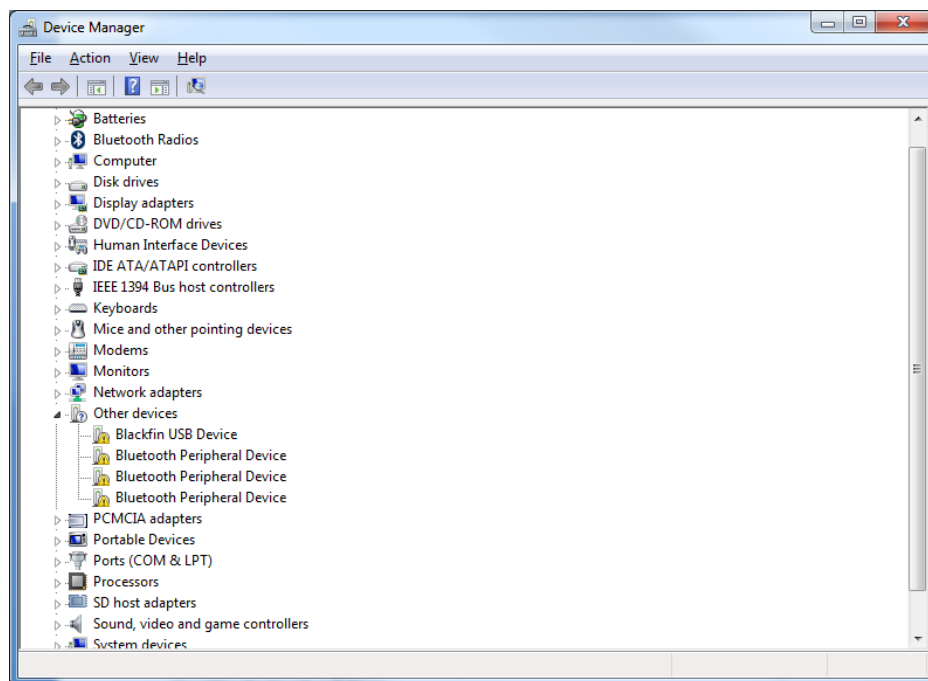


Figure 4: Device Manager Window

As the drivers have not yet been installed, the device will be listed under the **Other Devices** category. Find the **Other Devices** category; expand it if it is not already expanded (by clicking on the arrow to the left of the category.)



In the list of devices in the **Other Devices** category will be a device named **Blackfin USB Device**. Right click on the **Blackfin USB Device** and a context menu will be displayed.

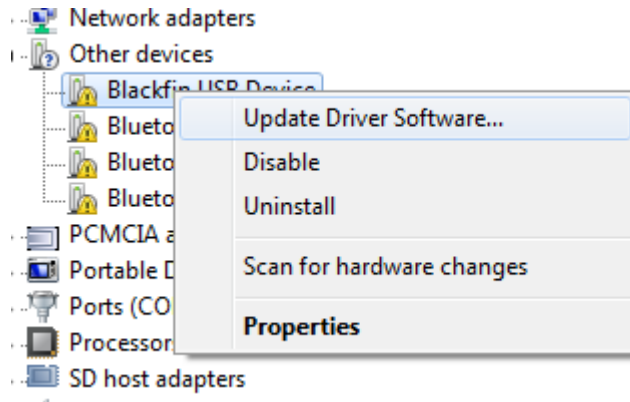


Figure 5: Blackfin USB Device context menu

Click the **Update Driver Software** menu item. The **Update Driver Software** wizard window now appears.

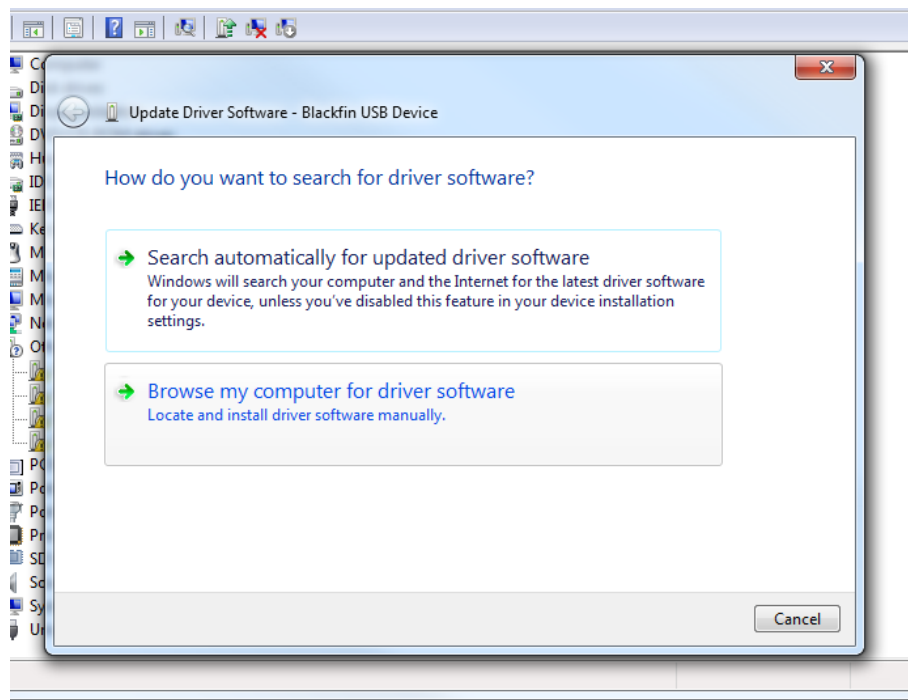


Figure 6: Update Driver Software wizard

Click the **Browse my computer for driver software** selection. The wizard will then show the **Browse for driver software on your computer** window.

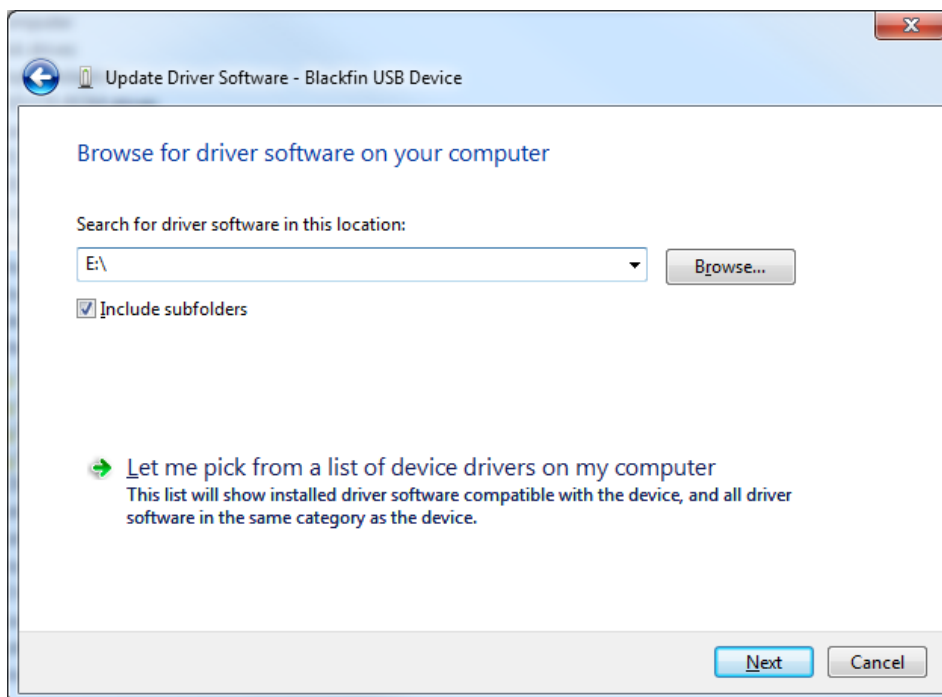


Figure 7: Browse for driver software on your computer window

If the letter of the CD drive is known, type it into the edit box (shown as **E:** above.)

Otherwise, click the **Browse** button and select the CD drive from the window that appears then click on the OK button.

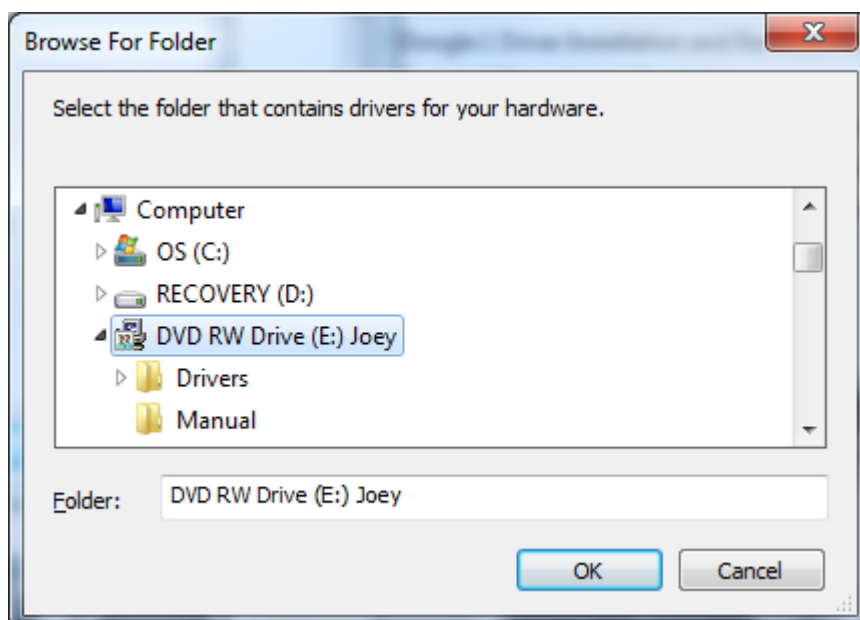


Figure 8: Browse For Folder Window

In the **Browse for driver software on your computer** window, tick the **Include subfolders** checkbox (if it is not already ticked.) Click on the **Next** button.

The wizard will now begin installing the driver.

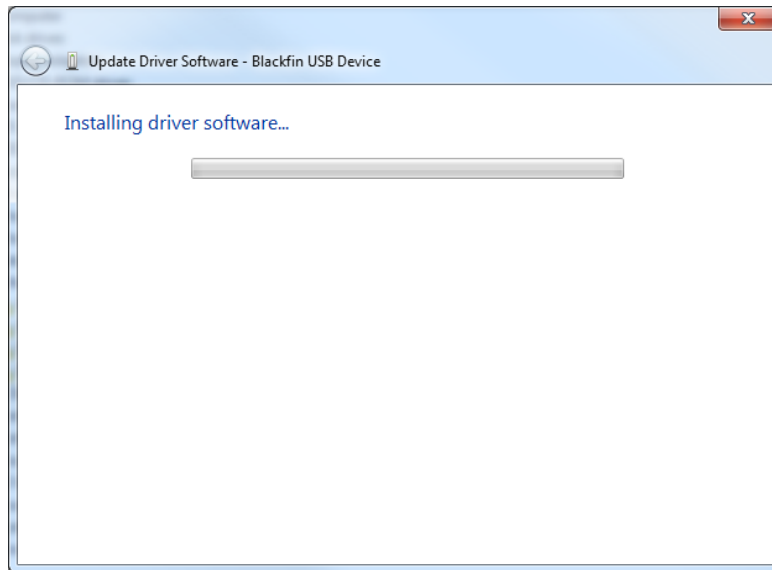


Figure 9: Installing driver software progress window

After the driver installation process is complete, the successful driver install window is displayed.

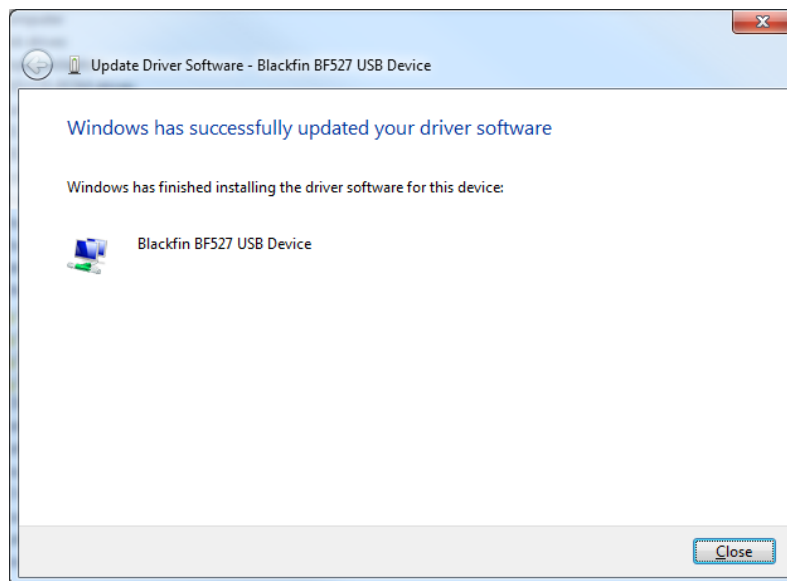


Figure 10: Driver installation success window

Click on the **Close** button. The driver installation is now complete.

To check that the installation was successful, perform the following steps. Note that this assumes that the **Device Manager** window is still open from the previous steps in this procedure.

In the **Device Manager** window, find the **ADI Development Tools** category. Expand the category if it is not already expanded (by clicking on the arrow to the left of the category.) There will be an item under that category called **Blackfin BF527 USB Device**.

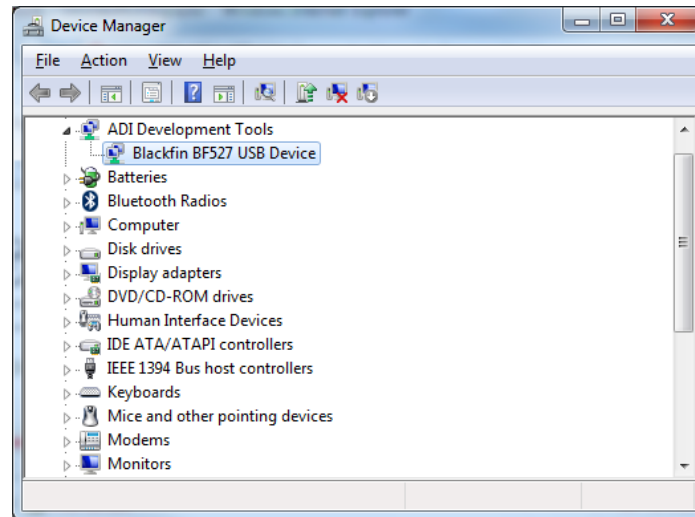


Figure 11: Installed Device Listing in Device Manager

The **System** and **Device Manager** windows may now be closed.



Driver Removal Procedure

Before starting this procedure please ensure the following:

- All Geonautics applications have been closed. It is recommended that all applications be closed.
- The Dongle 3 USB Downloader is connected to the Computer. (Note: The driver will have been assigned to the USB port that the Dongle 3 was originally connected to. Ensure it is connected to the same USB port.)

Load the **System** window by any of the following methods:

- by holding down the **Windows** (⊞) key and pressing the **Pause** key,
- by clicking on the **Start** button, selecting **Control Panel**, selecting the **System and Security** item, then selecting the **System** item, or
- by typing the following into the address bar of a Windows Explorer window and pressing enter: **"Control Panel\System and Security\System"** (without the double quotes.)

The **System** window will then be displayed.

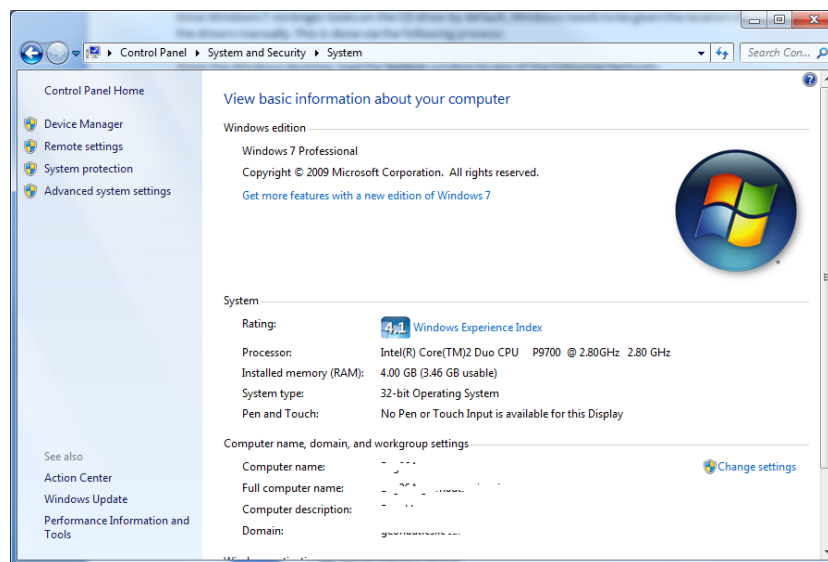


Figure 12: System Window

Select the **Device Manager** item in the top-left corner of the window.

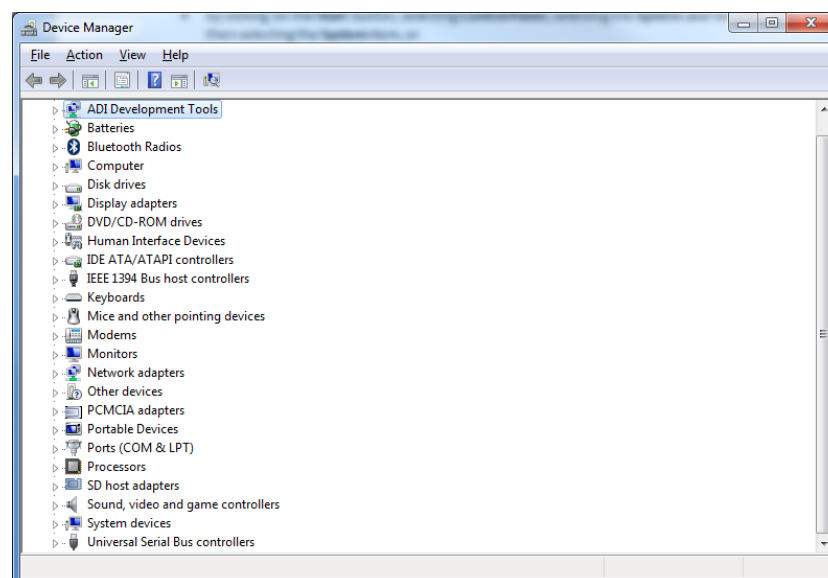


Figure 13: The Device Manager window



In the **Device Manager** window, find the **ADI Development Tools** category. Expand the category if it is not already expanded (by clicking on the arrow to the left of the category.) There the **Blackfin BF527 USB Device** will be found.

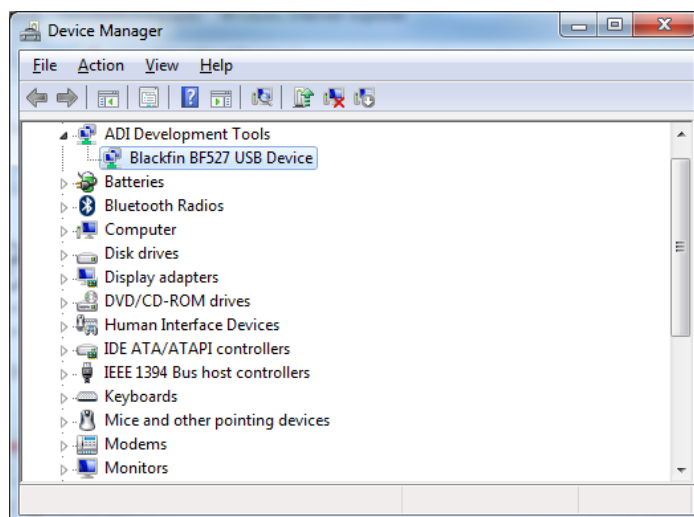


Figure 14: Installed Device Listing in Device Manager

Right click on the **Blackfin BF527 USB Device** item to display the driver update window.

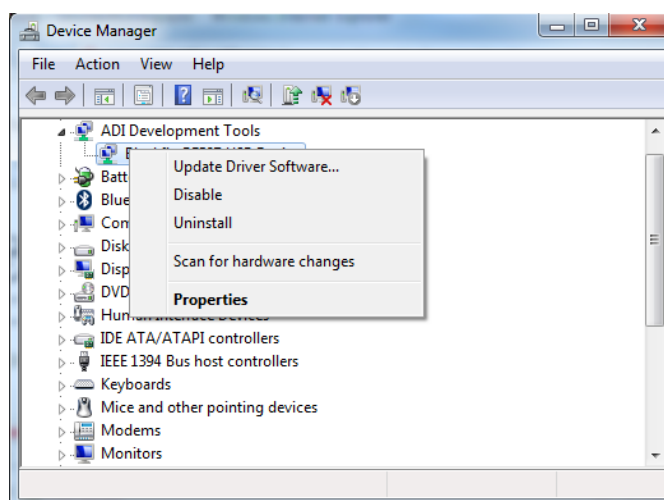


Figure 15: Blackfin BF527 USB Device context menu

Select the **Uninstall** menu item. A confirmation window will be displayed.



Figure 16: Confirm Device Uninstall window

If the drivers are not to be used again, tick the **Delete the driver software for this device** check box.

Click the **OK** button. The driver uninstallation process will then be complete. The **System** and **Device Manager** windows may now be closed.